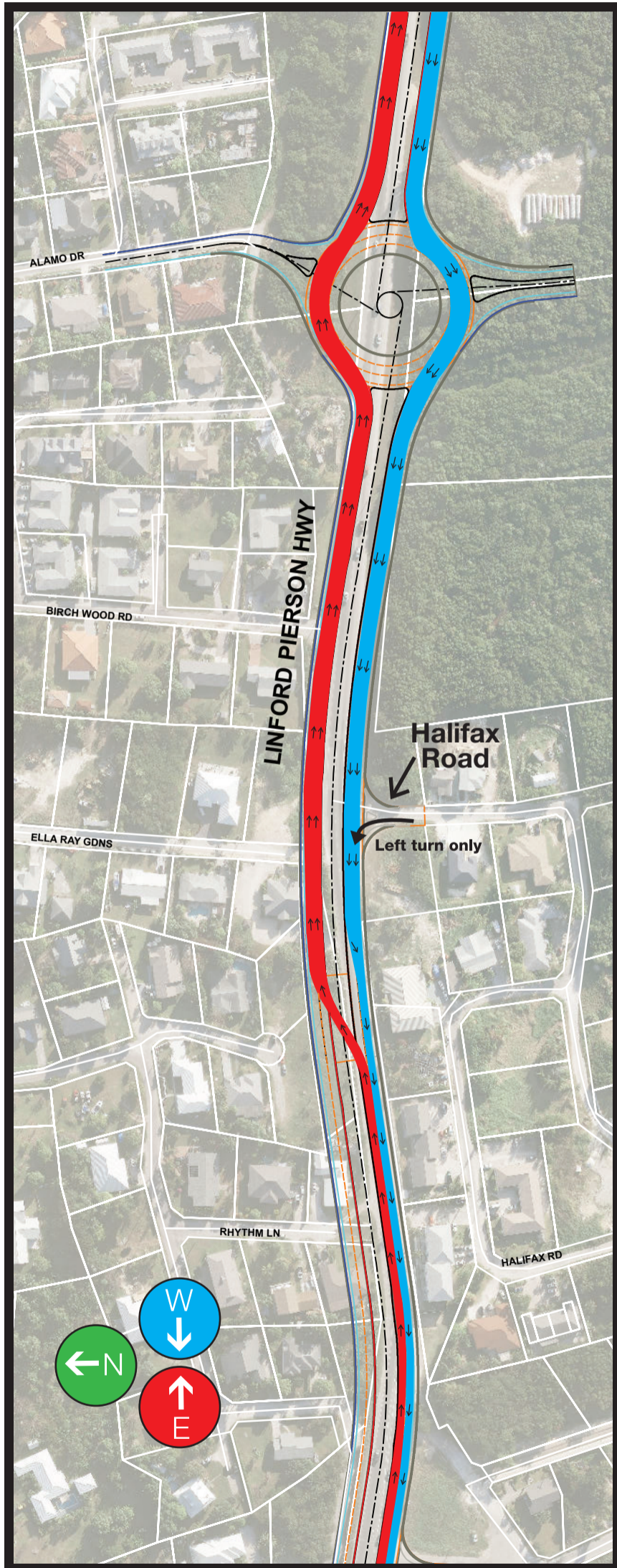


Temporary Road Layout

Linford Pierson Highway Eastbound and Westbound Traffic



**New Road Layout starts
Sunday, November 12th**



WESTBOUND TRAFFIC

on the Linford Pierson Highway will merge down to one lane just after Halifax Road and combine with Eastbound traffic.



EASTBOUND TRAFFIC

on the Linford Pierson Highway will be diverted to the new highway just before Halifax Road.

NOTE

**ALL TRAFFIC
EXITING
HALIFAX ROAD
will need to turn left.**

**Please follow all relevant
signs and road markings**



For information contact the National Roads Authority
Telephone 946-7780

 visit our facebook page www.facebook.com/nrroads/